

Self-healing - Non inductive
Auto-cicatrisant - Non inductif

Start-up & phase shift
Compensation of inductive loads
Démarrage et déphasage moteur
Compensation des charges inductives



Dielectric - Diélectrique
Metallized polypropylene MKP - *Polypropylène métallisé MKP*

Housing - Boîtier
Cylindrical case, self extinguishing plastic in PC-ABS UL 94 VO
Cylindrique en plastique auto-extinguible PC-ABS-UL 94 VO

Sealing - Obturation
Polyurethane resin - *Résine polyuréthane*

Tolerance - Tolérance
± 2, ± 5, ± 10 % Asymetrical upon request - *Asymétrique sur demande*

Operating temperature - Température d'utilisation
-40° to +85°C - *-40°C à +85°C*

Test voltage between terminals
Tension d'essai entre bornes
2 x U_r (10 seconds) - *2 x U_r (10 secondes)*

Fixing of the case - Fixation du boîtier



Bottom threaded stud
Fixation par vis de fond

Test voltage between terminals
Tension d'essai entre bornes
2 x U_r (10 seconds) - *2 x U_r (10 secondes)*

Rated voltage U_r - Tension nominale U_n
From AC 250V up to AC 600V - *De 250V à 600V AC*

Rated frequency - Fréquence nominale
50-60 Hz

Maximum operating voltage & current
Tension et courant de service max
U_{max}: 1.1xU_r, I_{max}: 1.3xI_r

Temperature coefficient - Coefficient de température
-300 to -150 ppm / °C - *-300 à -150 ppm / °C*

Standard - Normes
IEC 252-EN 60252 VDE 560-8 - *CEI 252-EN 60252 VDE 560-8*

Life expectancy - Durée de vie

Tmin: -25°C, Tmax: +55°C, +70°C, +85°C
Damp heat days: - *Nbre jours de l'essai à chaleur humide*
21
Class of safety - *Classe de sécurité*
P0

Code article Part number	250 V AC 350 V DC	400 V AC 560 V DC	550 V AC 800 V DC
PC	10 000 h		
PE	30 000 h	10 000 h	1 000 h*
PMF		30 000 h	3 000 h

*T_{max}: 70°C



amelec Electronic GmbH
Brunnwiesenstrasse 6A
8157 Dielsdorf



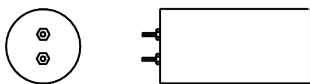
Tel.: 044 862 00 62
Fax: 044 862 00 63



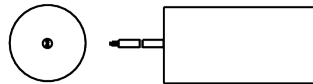
info@amelec.ch
www.amelec.ch
shop.amelec.ch

Part number Code article	Capacitance Capacité	Ø (mm)	L (mm)	I _{peak} I _{crête}	I _{rms} I _{eff}	ESR (mΩ)
PC100AL	1	15	36	35	0.7	27
PC150AL	1.5	21	49	35	0.7	19
PC200AL	2	21	49	35	0.7	15
PC250AL	2.5	21	49	35	0.7	12.5
PC300AL	3	21	49	35	0.7	10.5
PC400AL	4	21	49	70	1	8
PC500AL	5	25	49	70	1	6.5
PC600AL	6	30	49	70	1.2	6
PC800AL	8	30	49	80	1.5	4.6
PC1000AL	10	30	49	80	1.5	3.9
PC1200AL	12	35	49	90	1.6	3.6
PC1600AL	16	35	66	120	2.4	3
PC2000AL	20	35	66	150	2.7	2.6
PC2500AL	25	40	68	180	3.5	2.3
PC3000AL	30	40	68	180	3.5	2.1
PC3500AL	35	45	66	290	5.3	2
PC4000AL	40	45	86	300	6	1.9
PC5000AL	50	45	86	350	6.5	1.7
PC6000AL	60	50	86	370	7.5	1.6
PC8000AL	80	50	116	370	7.5	1.6
PC10000AL	100	55	116	500	10	1.5
PC15000AL	150	60	116	650	14	1.35
PC20000AL	200	72	116	1100	22	1.3
PE100AL	1	21	49	150	1.1	29
PE150AL	1.5	21	49	180	1.6	20
PE200AL	2	25	49	200	2.2	15
PE250AL	2.5	25	49	230	2.8	12.5
PE300AL	3	30	49	245	2.9	11
PE400AL	4	30	49	265	3.1	9.5
PE500AL	5	30	49	300	3.5	7
PE600AL	6	35	49	320	3.5	5.9
PE800AL	8	35	66	320	3.5	4.8
PE1000AL	10	35	66	320	3.5	4.2
PE1200AL	12	35	66	320	3.5	3.8
PE1600AL	16	40	68	400	4.5	3.2
PE2000AL	20	45	68	420	5	2.8
PE2500AL	25	45	86	450	5	2.5
PE3000AL	30	45	86	450	6	2.2
PE3500AL	35	50	86	450	6	2
PE4000AL	40	45	116	520	7.5	2
PE5000AL	50	50	116	700	11	1.8
PE6000AL	60	55	116	700	11	1.7
PE8000AL	80	60	116	850	13	1.5
PE10000AL	100	65	116	1200	17	1.4
PMF050AL	0.5	21	49	35	0.7	50
PMF100AL	1	30	49	35	0.7	26
PMF150AL	1.5	35	49	35	0.7	18
PMF200AL	2	35	49	55	1	14
PMF250AL	2.5	30	66	55	1	11.2
PMF500AL	5	40	68	80	1.5	6.6
PMF600AL	6	40	68	120	2.5	5.6
PMF800AL	8	45	66	120	2.5	4.5
PMF1000AL	10	45	88	180	3.5	3.8
PMF1500AL	15	50	86	190	3.7	3.8
PMF2000AL	20	55	86	280	5.5	2.5
PMF2500AL	25	55	86	360	7	2.2
PMF3000AL	30	60	116	360	7.5	2.1
PMF3500AL	35	60	116	550	12	1.9
PMF4000AL	40	65	116	600	14	1.8

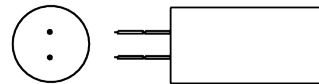
Terminals - Sorties



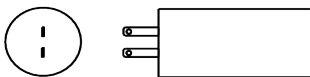
A - Screw terminals - Tiges filetées



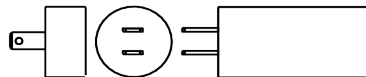
B - Double insulated wires
Fils double gainé



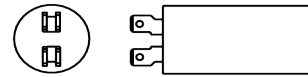
C - Insulated wires - Fils gainés



D - 2.8 Singles tags - Cosses simples 2.8



E - 6.35 Singles tags
Cosses simples 6.35



F - 6.35 double tags
Cosses doubles 6.35



amelec Electronic GmbH
Brunnwiesenstrasse 6A
8157 Dielsdorf



Tel.: 044 862 00 62
Fax: 044 862 00 63



info@amelec.ch
www.amelec.ch
shop.amelec.ch